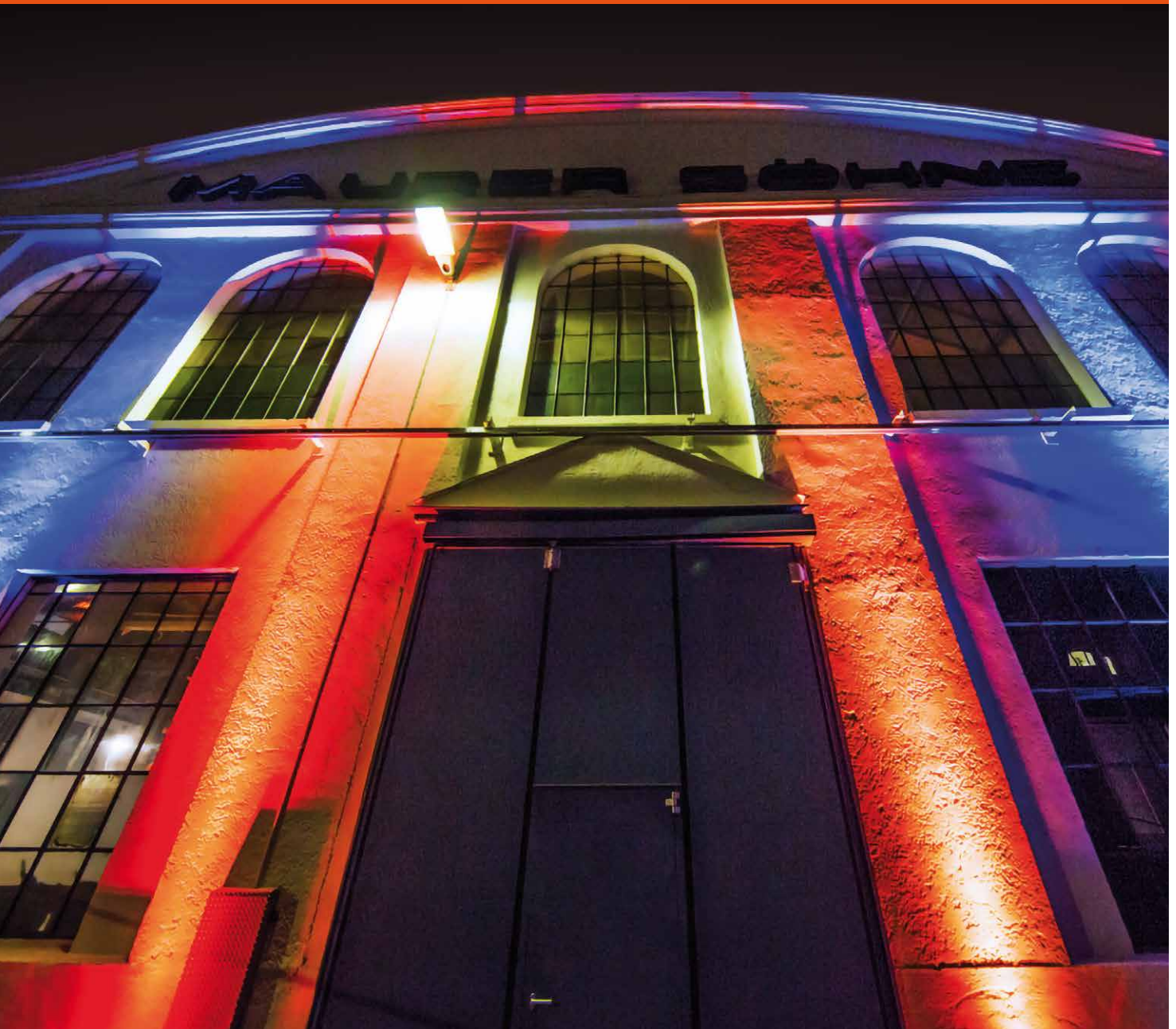


# MAURER SE

Innovative since 1876



*forces in motion*





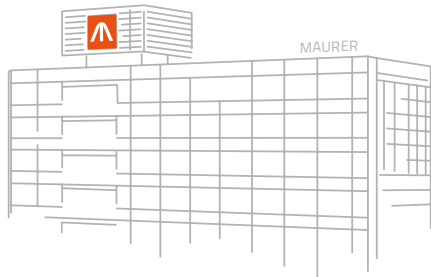
MAURER SE is a **leading specialist** in **machine and steel construction** with more than **1,000 employees worldwide.**

We are a **market leader** in the fields of **structural protection systems:**

- Bridge bearings
- Expansion joints
- Seismic devices
- Vibration absorbers
- Vibration isolation
- Monitoring systems.

We manufacture **Roller coasters, Observation wheels** and **special designs** in **steel construction** and are involved in **numerous spectacular large-scale projects** all over the world.

# Innovative through Experience

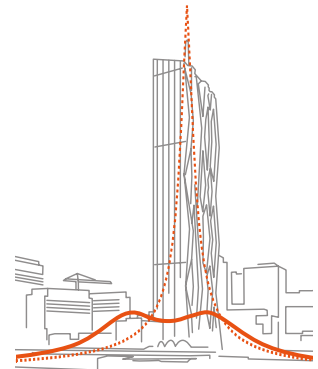


## INDEPENDENCE

Since its foundation in 1876, MAURER has been an independent family-owned company. From the beginning, steel construction has been our core activity. Today, the MAURER Group is one of the technological world market leaders in its specialist fields.

## STRENGTH

Controlling forces and movements in buildings, bridges and complex dynamic structures is the fundamental part of our business activities. Impacts can emerge from earthquakes, traffic loads, or climatic influences and are controlled by the targeted use of special MAURER products, such as expansion joints, structural bearings, vibration absorbers, seismic protection devices and vibration isolation systems; they therefore protect the objects from damage.

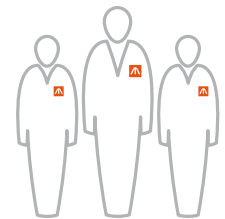


## RESPONSIBILITY

We offer our customers products and solutions which have proven to stand for longevity, quality and safety. With our MAURER brand, we clearly position ourselves in the premium segment. Our corporate focus is based on long-term thinking and action. Striving for continuous improvement, innovations and customer satisfaction is part of our daily effort.

## TOGETHERNESS

What all our business activities have in common is the control or controlled governance of forces, which is expressed in our corporation's claim "forces in motion". A company policy based on values and objectives as well as good partnership with you, our customers and suppliers, are essential elements of our corporate and management culture.



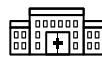
STRUCTURAL BEARINGS



EXPANSION JOINTS



TUNED MASS DAMPERS



SEISMIC PROTECTION DEVICES



VIBRATION ISOLATION



ROLLER COASTERS



OBSERVATION WHEELS

# Looking back to the future –

>> 1876

Craftsman **Friedrich Maurer** establishes a small workshop as a **metal spinner** in **Munich**.

Over 20 years, a **metalware factory** evolves from this workshop.

>> 1911

**Official registration** of the company in the **commercial register**.

>> 1924

**Manufacture** of lattice masts as well as pressed and punched parts for the equipment of **railway vehicles of the Deutsche Reichsbahn** (German State Railway).

>> 1925

The company **moves** to its current location in the **north of Munich**. From then on **"iron structures"** are also offered, such as **hall and roof constructions, crane tracks and bridges**.

>> 1932

**Brake cylinder** supports are manufactured in large quantities under a **Kunze-Knorr** license.

>> 1934

Johannes Beutler purchases the adjacent plot of land thus enabling a **substantial expansion of the factory**.

The company starts with **steel construction on a large scale**.

>> 1938

Further mechanical engineering products: **traction drives for mixers**.

>> 1939

Due to **government requirements, several armaments** are included in the production programme. The **Second World War** initiates a temporary **peak in the company's business activities** with over 1,000 employees and large orders.

>> 1945

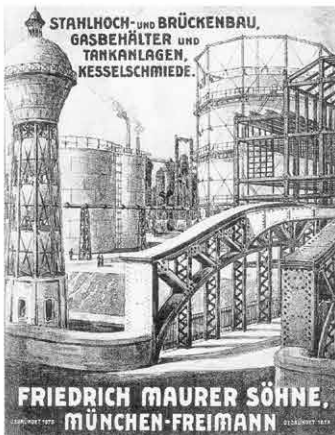
The years 1945 to 1954 are characterised by **dismantling, improvisation and reconstruction**.



1876 1911 1925 1932 1934 1935 1938 1939 1945

>> 1899

After the founder's death in 1899, his sons Friedrich and Georg continue the business under a new name: **FRIEDRICH MAURER SÖHNE**.



>> 1929

**First experience of mechanical engineering:** drilling stands for the Deutsche Reichsbahn (German State Railway).

>> 1931

A **large-scale order for the scrapping of railway engines** results in a business **encounter** between **Georg Maurer and Johannes Beutler**.

Despite the economic crisis, Beutler **acquires** the **"ironworks" FRIEDRICH MAURER SÖHNE** in 1931 and continues the business under the same name.

>> 1935

**Further development of welding technique** enables the **construction of gasometers**.

>> 1936

The first **gas separators** for oil drilling are produced and some are **exported as far as the USA**.

>> 1937

The **expansion of air transport** leads to a **significant boost**. In particular, the **hangar gates** make **MAURER SÖHNE** well-known throughout Germany.



>> 1944

Towards the **end of the war**, most of the **company buildings** are **destroyed** in air strikes.



# a MAURER history of perspectives

>> 1947

First post-war product: **agricultural vehicle trailers**.



>> 1965

A new speciality is addressed: **watertight carriageway joint constructions**.

From 1965 to 1976, the company establishes its reputation through **patent acquisitions** and **in-house further developments** of carriageway expansion joints ("MAURER Joint") and becomes the **leading manufacturer**.

>> 1978

Introduction of the **MAURER Strip Seal** (> 800 km installed by 2022).

>> 1948

Delivery of **lattice girders** and other parts for the ropeway **Spitzingsee**.

>> 1951

Following **Johannes Beutler's death**, his widow **Margarete Beutler** continues the business as a limited partnership.

>> 1962

From 1962 to 1976, the company delivers a whole range of **cantilever scaffoldings** (centrings) for concrete bridge construction, making an **essential contribution** to development in this particular line of production.

>> 1966

**Three new factory buildings** and an **administrative building** are built.



1950 1965 1975 1985

>> 1954

Numerous **pylons, pillars**, and **anchor portals** are delivered for **expanding the power supply** (Bayernwerke).

>> 1957

First **steam boiler**, Maurer-de Poray system, is completed.

>> 1958

From 1958 to 1963, the company is involved in **several important steel structures** in the **Munich area**, such as the **reconstruction of the main station**, **the Palace of Justice**, and **the National Theatre**.

In addition, **steel bridges, steel stacks** and other products of **container and sheet metal manufacturing** are produced.

>> 1964

Dipl.-Ing. Hans Beutler, a son of Johannes Beutler, joins the company and takes over the **management** in 1971.

New products are added: **malting plants** and **special containers** like **drying towers** and **skips**.

>> 1970

A **subsidiary** in **Dortmund-Hörde** and several **agencies in other European countries** are founded.

>> 1973

In 1973, the **manufacture of bridge bearings** begins. Through **the acquisition of Fritz Kreutz KG** with its long-term experience in bridge construction, MAURER can present a complete, **fully developed product range of bridge bearings for bridge equipment** in a short time.



>> 1984

Introduction of the **swivel joint expansion joints**. They can move in all directions: in the longitudinal and transverse direction as well as in the vertical direction.



>> 1991

Foundation of the **new production site** in **Bernsdorf**.

>> 1993

**Roller coaster Wild Mouse, Munich:**  
Coaster type with no inversions.



>> 2001

**Terminal 2 Munich Airport,**  
steel structure.

>> 2004

**Development of low-noise expansion joints** (with rhomboid or sinusoidal plates).

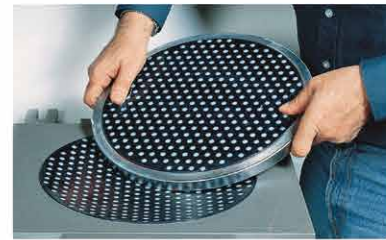
Subsidiaries in **Russia and France.**

Development of **the Sliding Isolation Pendulum Bearing** (seismic isolation of buildings, such as New Acropolis Museum in Athens).



>> 2005

Introduction of **semi-active cable vibration absorbers** for stay cables (such as Russky Bridge and Sutong Bridge China).



>> 2006

**Europe-wide approval of MSM®** (ETA – European Technical Approval)  
Spherical bearings with smaller dimensions and longer service life.

>> 1995

First **DS 2000** Storebæltsbroen.



>> 1999

**Production sites in Turkey and China** are established.

Start of our own **elastomeric bearing production.**

>> 1996

Start of production of **seismic protection systems.**



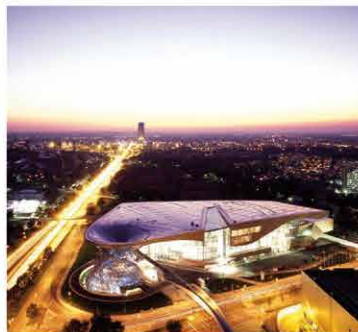
>> 2003

**Development of MSM®** (MAURER Sliding Material): a high-performance sliding material for structural bearings.



>> 2004

2004 to 2006: **steel construction and roofing of BMW Welt, Munich.**



>> 2010

Acquisition of the production site **MAURER Sanfield India**

Development of **MAURER Wave-Shaped Expansion Joint XW1**. This low noise single-seal joint has a new wave-shaped geometry and facilitates a reduction of noise emission by at least 40%.



Introduction of **MSA® Spherical Bearings** (MAURER Sliding Alloy) for highest corrosion protection and approval in Germany.

1995 2005 2006 2010



>> 2011

Development of the **MAURER Modular Bridging System** for the temporary crossing of an expansion joint.



>> 2018

New **elastomer compound mixing plant**, **Maurer Söhne** Torbali, Turkey.



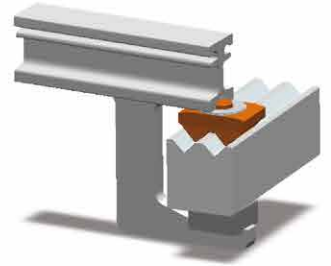
>> 2018

Introduction of **MAURER Guided Cross Tie**, the first absolutely earthquake-proof expansion joint for railway bridges worldwide.



>> 2021

**MSM° Swivel Joist Expansion Joint**, a further development of the proven **MAURER Swivel Joist Joint**.



>> 2021

Introduction of **MANTIS°**, a highly effective and durable long-stroke hysteretic damper and of **SHARK°**, a highly effective bilinear hysteretic damper.



# 2014 2018 2021 2023

>> 2012

Foundation of the **production site in Brazil**.

>> 2016

Today, the company is owned by the **Beutler family** in its **third generation**.



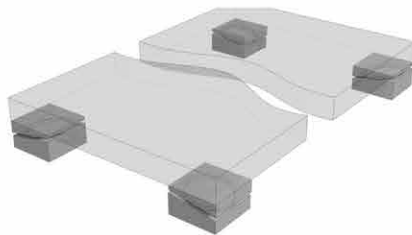
>> 2019

Implementation of the Munich observation wheel: **Umadum, the Munich Ferris Wheel**.



>> 2021

Further development of **spherical bearings for special applications (such as Monorail)**.



Introduction of **vibration dampers for roller coaster comfort on cruise ships**.



>> 2021

**MAURER SIP°-V** (Sliding Isolation Pendulum) represents the compact solution of a combined seismic and (micro-)vibration isolator.

>> 2021

**MAURER Sew Tie railway expansion joint** for gravel superstructure (and for slab track).



>> 2022

Opening of the **MAURER Test Facility** for seismic protection systems in Torbali, Turkey.

>> **PRODUCTION SITES**

**HEADQUARTERS MUNICH  
MAURER SE**

Frankfurter Ring 193  
80807 Munich  
Phone +49. 89. 32394-0  
Fax +49. 89. 32394-306  
info@maurer.eu

**GERMANY  
MAURER SE BERNSDORF**

Kamenzer Strasse 53  
02994 Bernsdorf  
Phone +49. 35723. 237-0  
Fax +49. 35723. 237-20  
info\_bd@maurer.eu

**BRAZIL  
MAURER DO BRASIL  
INDÚSTRIA, COMÉRCIO E  
SERVIÇOS LTDA.**

Rua Icó, 60  
CEP-07232-078  
Cumbica Guarulhos, Sao Paulo  
Phone +55. 112412-7400  
Fax +55. 1124-2145  
info@maurer-brazil.br

**CHINA  
MAURER BRIDGE  
ACCESSORIES CO. LTD.**

Fangzhou Road · Luhe  
Nanjing 211500 Jiangsu  
Phone +86. 25. 57126210  
Fax +86. 25. 57757160  
gma@maurer-china.com

**INDIA  
MAURER SANFIELD INDIA**

Sector D · Industrial Area  
Govindpura  
462023 Bhopal  
Phone +91. 755. 4233535  
Fax +91. 755. 4270730  
sanfield@sanfield.india.in

**CROATIA  
METAL UNION D.O.O.**

Lug 55/b  
47201 Draganić  
Phone +385. 91. 622. 2220  
K.Krstacic@maurer.eu

**TURKEY  
MAURER SOEHNE  
GENLEŞME DERZLERİ  
SAN. VE TIC. LTD. ŞTİ.**

Kemalpasa Yolu  
35860 Torbalı  
Phone +90. 232. 8573300  
Fax +90. 232. 8573144  
info@maurer-soehne.com.tr

>> **SUBSIDIARIES**

**GERMANY  
MAURER SE LUENEN**

Zum Holzplatz 2  
44536 Luenen  
Phone +49. 231. 43401-0  
Fax +49. 231. 43401-14  
info\_nd@maurer.eu

**FRANCE  
MAURER FRANCE SARL**

75, Avenue Parmentier  
75011 Paris  
Phone +33.66 438 75 75  
d.jacomo@maurer.eu

**GREAT BRITAIN  
MAURER UK LTD.**

Thame Road, Long Crendon  
BUCKS HP 18 9EJ AYLESBURY  
Phone +44 7722513918  
sales@maureruk.com

**NETHERLANDS  
MAURER SOEHNE  
HOLLAND B.V.**

Erasmusweg 2A  
4104 AK Culemborg  
Phone +31. 345 510 570  
Fax +31. 345 510 701  
info@maurer-soehne.nl

**AUSTRIA  
MAURER SOEHNE GES. MBH**

Donaufelder Strasse 101  
Stiege 7 · Top 4  
1210 Vienna  
Phone +43. 1 255 47 60  
Fax +43. 1 255 47 60 4  
info@maurer-soehne.at

**SWITZERLAND  
MAURER SWITZERLAND  
GMBH**

Neptunstrasse 25  
8032 Zurich  
Phone +41. 44 520 8069  
info@maurer-switzerland.ch