



Direct-to-Substrate

corrosion solutions

DTS



Direct-to-Substrate

corrosion solutions

DTS

What is Direct-To-Substrate (DTS)?

The Libert Paints DTS is a high-performance industrial paint range with universal adhesion. Cryltane DTS is a two component acrylic polyurethane paint with a very good adhesion on various types of surfaces:

- Metal surfaces such as steel, aluminium, galvanised surfaces, stainless steel, CRS...
- Synthetic substrates
- Mineral substrates such as walls, concrete,...

The system is a "typical" primer and top coat in "one" whereby as customer you can work with a single paint system. Depending on the degree of gloss, you choose a specific product. Depending on the desired degree of protection, you choose one or more layers.

It could not be simpler. Our DTS range contains only 4 products for all possible applications:

- Cryltane DTS 20 (previously AC Primer)
- Cryltane DTS 40 (previously AC Satin)
- Cryltane DTS 60
- Cryltane DTS 80 (previously AC Gloss)

A paint for many surfaces: so a real 'all-rounder' !



PROTECTION MADE EASY

 **Libert**
industrial paints

Direct-to-Substrate

corrosion solutions

DTS



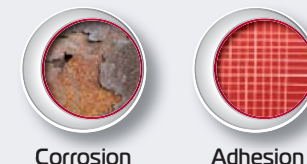
Our advantages at a glance:

- **A limited range of products for a very wide scope of application. Easy to use!**
- **Easy to use!** Can be applied by brush, roller or spray. Electrostatic spraying is also possible. **Long term of protection** in many climatic circumstances.
- **Important time saving:** can be applied wet-on-wet. The second layer can be already applied after 30 minutes. This way, you also save time having not to rinse the spray equipment and reduce the consumption of solvent and VOC emission.
- **Long term protection in many climatic circumstances.**
- **High productivity improvement** thanks to a better management of your workshop area and faster painting process.
- **Very good properties** for corrosion protection, chemical resistance, colour and gloss stability.
- **Can be tinted** on industrial tinting machine (RAL, NCS, British Standard,...).
- Specific colours are **available from 1L!**
- Can be used as a **one-can-system.**
- **Long potlife**

PROTECTION MADE EASY

 **Libert**
industrial paints

The Libert Paints DTS range



Cryltane DTS 20

1L • 4L • 10L



Cryltane DTS 20 is a two-pack mat acrylic polyurethane paint with an excellent adhesion on steel, aluminium, galvanised surfaces, stainless steel, OSB plates, wood, MDF, OSB plates, a lot of plastics (hard PVC, ABS, polyester....) and mineral surfaces (walls, floors).

Cryltane DTS 20 is used as primer and finishing coat at the same time. It is a good anticorrosion primer based on zinc phosphate. It is weather and chemically resistant. The cured paint film is characterized by a high hardness combined with elasticity.

Cryltane DTS 20 can also be applied by sprayer as textured finish on machines, office machinery, and lab equipment. Material defects can easily be smoothed by using this product.

Cryltane DTS 40

1L • 4L • 10L



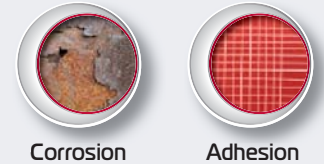
Cryltane DTS 40 is a two-pack low satin acrylic polyurethane paint with an excellent adhesion on steel, aluminium, galvanised surfaces, stainless steel and many plastics.

Cryltane DTS 40 is used as primer and finishing coat at the same time. It is a good anticorrosion primer based on zinc phosphate. It is weather and chemically resistant. The cured paint film is characterized by a high hardness combined with elasticity.

Cryltane DTS 40 can be applied by sprayer as textured finish.

PROTECTION MADE EASY

The Libert Paints DTS range



Cryltane DTS 60

1L • 4L • 10L



Cryltane DTS 60 is a semi-gloss two-pack acrylic polyurethane paint with an excellent adhesion on steel, aluminium, galvanised surfaces, stainless steel and many plastics.

Cryltane DTS 60 is used as primer and finishing coat at the same time. It is a good anticorrosion primer based on zinc phosphate. It is weather and chemically resistant. The cured paint film is characterized by a high hardness combined with elasticity.

Cryltane DTS 60 can be applied by sprayer as textured finish.

Cryltane DTS 80

1L • 4L



Cryltane DTS 80 is a gloss two-pack acrylic polyurethane paint with an excellent adhesion on steel, aluminium, galvanised surfaces, stainless steel and many plastics.

Cryltane DTS 80 is used as primer and finishing coat at the same time. It is a good anticorrosion primer based on zinc phosphate. It is weather and chemically resistant. The cured paint film is characterized by a high hardness combined with elasticity.

PROTECTION MADE EASY

Overview of our technical specifications:



Libert Paints has a long tradition of intensive laboratory research. All our DTS products are developed in-house and tested before being delivered to the customer. Many of the tests were done in-house with our own measuring equipment. Other tests are made by external laboratories such as WTCB, CORI, Unifap, ... This way, we continuously challenge ourselves to try to develop the ideal products for you. Detailed test reports are available on request.

Thanks to our years of experience as paint manufacturer and our many references with our DTS, we can recommend you this high performance paint with confidence.

PROTECTION MADE EASY



Overview of our technical specifications:

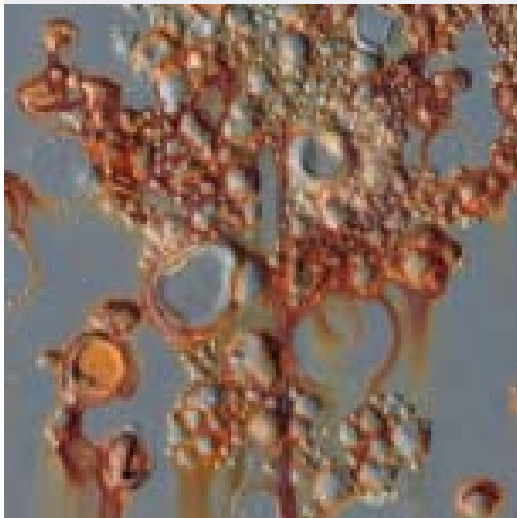


| | Cryltane DTS 20 | Cryltane DTS 40 | Cryltane DTS 60 | Cryltane DTS 80 |
|---|---|---|--|---|
| Gloss Gardner 60° | 20 (± 5) | 40 (± 10) | 60 (± 10) | 80 (± 10) |
| Density | 1.40 ± 0.05 g/ml | 1.35 ± 0.05 g/ml | 1.33 ± 0.05 g/ml | 1.45 ± 0.05 g/ml |
| Potlife at 20°C | + - 5 h | + - 6 h | + - 6 h | + - 5 h |
| Solids content • in volume • in weight | 60 ± 2% 74 ± 2% | 60 ± 2% 75 ± 2% | 62 ± 2% 74 ± 2% | 58 ± 2% 76 ± 2% |
| VOC | 370 g/L (not diluted) < 500 g/L (diluted at 25% max) | < 377 g/L (not diluted) <500 g/L (diluted at 25 % max) | <355 g/L (not diluted) <500 g/L (diluted at 25 % max) | 350 g/L (not diluted) <490 g/L (diluted at 20 % max) |
| Dry Time at 20°C • Dustdry • Tackfree • Dry | 30 min. 3 hours 12 hours | 40 min. 5 hours 14 hours | 40 min 4 hours 12 hours | 45 min. 5 hours |
| Recoatable after (brush-roller) Spray Only | 30-45 min or after 12 h | 30-45 min or after 12 h | 30-45 min or after 12 h | 30-45 min or after 12 h |

PROTECTION MADE EASY



Overview of our technical specifications:



| | Cryltane DTS 20 | Cryltane DTS 40 | Cryltane DTS 60 | Cryltane DTS 80 |
|--|----------------------|----------------------|----------------------|---------------------------|
| Maximum dry thickness in μm | 100 | 100 | 100 | 100 |
| Stability of colour and gloss | Good | Very good | Very good | Very good |
| Adhesion on : | | | | |
| • Iron and steel | Very good | Very good | Very good | Very good |
| • Galvanization | Very good | Very good | Very good | Very good (after sanding) |
| • PVC | Very good | Very good | Very good | Very good |
| • Inox | Very good | Good | Good | |
| • Aluminium | Very good | Very good | Very good | Very good (after sanding) |
| Scratch resistance | Good | Very good | Very good | Very good |
| Theoretical yield (60 μm dry) | 10 m ² /L | 10 m ² /L | 10 m ² /L | 10 m ² /L |

For a more detailed overview, please do not hesitate to ask our technical data sheets or test reports.



Application areas:

Cryltane DTS is applied particularly in the following areas:

- Transport: railways, trucks, buses
- Energy facilities
- OEM machines
- External facilities
- Cranes
- Oil and gas
- Cladding and roofing

PROTECTION MADE EASY



Further info about Libert Paints:
contact our sales and technical
representatives

LIBERT PAINTS n.v. s.a.

Nekkersputstraat 189 | 9000 Gent

T: +32 (0)9 216 88 70

F: +32 (0)9 226 61 81

info@libertpaints.com

www.libertpaints.com

PROTECTION MADE EASY

