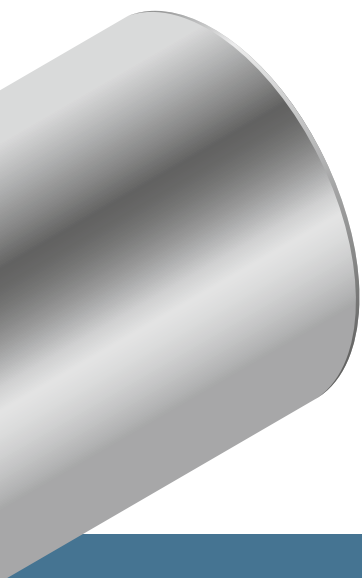
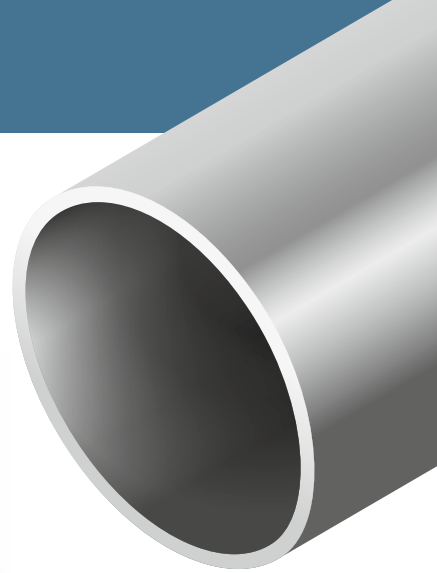


**Combined safety  
and responsibility.**



**straub**<sup>®</sup>   
  
**the right connection**

an OAliaxis company



STRAUB PRODUCTS



## Our experience – your guarantee

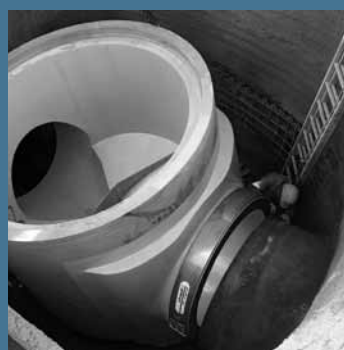
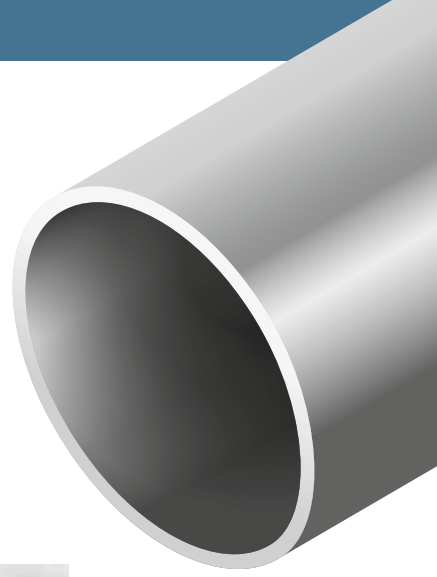
The name STRAUB is synonymous with expertise, quality and reliability. As an internationally leading manufacturer of pipe couplings, STRAUB not only invented the “original”, but also owns patents. Our unique pipe coupling concept is based on more than 40 years of experience and consistent further development. Comprehensive engineering competency and the proverbial Swiss precision work guarantee maximum quality and absolute reliability of permanent connections.



### **STRAUB solutions provide added value**

Based on the well-proven original STRAUB coupling technology, which can be found in millions of pipe connections worldwide, we combine different pipe materials such as metal and plastic for optimum solutions for customers – permanent pipe couplings which meet customers’ requirements to the full extent and can be found in a variety of special applications. Especially for sophisticated and specific challenges that require more than just standard solutions, you will benefit from our experience and various additional services related to the technique of positioning pipes. From consultancy and planning to extensive project support and proper documentation – we will assist you in completing your projects successfully.

# STRAUB pipe couplings: well-proven quality solutions for countless applications



## **Water**

Drinking water treatment  
Irrigation

## **Renewable energies**

Hydro power plants  
Wastewater energy  
Solar energy

## **Industry**

Transportation  
Shipbuilding  
Offshore



# STRAUB couplings

## You can rely on our products



Operating pressure up to

**67**  
bar

Temperature range

+100°C  
-30°C

\*

### STRAUB-METAL-GRIP

Pull out resistant pipe coupling for all metal pipes to meet the highest standards

Diameter **30.0 to 609.6**mm



Operating pressure up to

**46**  
bar

Temperature range

+100°C  
-20°C

\*\*

### STRAUB-GRIP-L

Pull out resistant pipe coupling for all metal pipes

Diameter **26.9 to 711.2**mm



Operating pressure up to

**67**  
bar

Temperature range

+100°C  
-30°C

\*

### STRAUB-METAL-GRIP FF

For use wherever fire protection is required by law

Diameter **30.0 to 457.2**mm



Operating pressure up to

**46**  
bar

Temperature range

+100°C  
-20°C

\*\*

### STRAUB-GRIP-L FF

For use wherever fire protection is required by law

Diameter **26.9 to 406.4**mm



Operating pressure up to

**6**  
bar

Temperature range

+40°C  
-10°C

### STRAUB-ECO-GRIP

Economical, pull out resistant pipe coupling for use in low pressure and temperature areas with metal pipes, PVC, ABS, CPVC

Diameter **26.9 to 168.3**mm



Operating pressure up to

**16**  
bar

Temperature range

+100°C  
-20°C

### STRAUB-PLAST-GRIP

Pull out resistant pipe coupling for plastic pipes

Diameter **40.0 to 160.0**mm



Operating pressure up to

**16**  
bar

Temperature range

+100°C  
-20°C

**STRAUB-COMBI-GRIP**  
Pull out resistant pipe coupling for transitions from plastic to metal piping  
Diameter **38.0/40.0 to 159.0/160.0** mm



Operating pressure up to

**25**  
bar

Temperature range

+100°C  
-20°C

\*\*\*

**STRAUB-FLEX 1L**  
Axially flexible pipe coupling for pipes of all materials  
Diameter **48.3 to 168.3** mm



Operating pressure up to

**25**  
bar

Temperature range

+100°C  
-20°C

\*\*\*

**STRAUB-FLEX 2**  
Axially flexible pipe coupling for pipes of all materials  
Diameter **172.0 to 2032.0** mm



Operating pressure up to

**25**  
bar

Temperature range

+100°C  
-20°C

\*\*\*

**STRAUB-FLEX 3**  
Axially flexible pipe coupling for pipes of all materials  
Diameter **219.1 to 4064.0** mm



Operating pressure up to

**25**  
bar

Temperature range

+100°C  
-20°C

**STRAUB-FLEX 3.5**  
Axially flexible pipe coupling for pipes of all materials  
Diameter **323.9 to 4064.0** mm



Operating pressure up to

**25**  
bar

Temperature range

+100°C  
-20°C

**STRAUB-FLEX 4**  
Wide pipe coupling for the restoration and repair of metal pipes in the upper pressure and diameter range  
Diameter **323.9 to 4064.0** mm



Operating pressure up to

**25**  
bar

Temperature range

+100°C  
-20°C

\*\*\*

**STRAUB-OPEN-FLEX 1L**  
Hinged, axially flexible pipe coupling for the repair of pipes of all materials  
Diameter **48.3 to 168.3** mm



Operating pressure up to <b>25 bar</b>	Temperature range +100°C -20°C ***
---	---

## STRAUB-OPEN-FLEX 2

Axially flexible pipe coupling for the repair of pipes of all materials

Diameter **172.0 to 2032.0 mm**



Operating pressure up to <b>25 bar</b>	Temperature range +100°C -20°C ***
---	---

## STRAUB-OPEN-FLEX 3

Axially flexible pipe coupling for the repair of pipes of all materials

Diameter **219.1 to 4064.0 mm**



Operating pressure up to <b>25 bar</b>	Temperature range +100°C -20°C ***
---	---

## STRAUB-OPEN-FLEX 3.5

Axially flexible pipe coupling for the repair of pipes of all materials

Diameter **323.9 to 4064.0 mm**



Operating pressure up to <b>25 bar</b>	Temperature range +100°C -20°C ***
---	---

## STRAUB-OPEN-FLEX 4

Wide pipe coupling for the restoration and repair of metal pipes in the upper pressure and diameter range

Diameter **323.9 to 4064.0 mm**



Operating pressure up to <b>16 bar</b>	Temperature range +40°C -5°C
---	------------------------------------

## STRAUB-CLAMP, one-piece

Axially flexible repair clamp for pipes of all materials

Diameter **44.0 to 330.0 mm**



Operating pressure up to <b>16 bar</b>	Temperature range +40°C -5°C
---	------------------------------------

## STRAUB-CLAMP, two-piece

Axially flexible repair clamp for pipes of all materials

Diameter **88.0 to 440.0 mm**

### Remarks:

The temperature ranges indicated are based on the use of EPDM sealing sleeves.  
EPDM and NBR sealing sleeves are used by default.

\* Various coupling sizes also available with H-NBR sealing sleeves (Temperature range: -20°C to 125°C)

\*\* Various coupling sizes also available with FPM/FKM sealing sleeves (Temperature range: -20°C to 180°C)  
Various coupling sizes also available with H-NBR sealing sleeves (Temperature range: -20°C to 125°C)

\*\*\* Various coupling sizes also available with FPM/FKM sealing sleeves (Temperature range: -20°C to 180°C)

All diameters and designs available plus accessories (strip inserts, stiffening rings, fitting pliers, tensioning straps) can be obtained from the technical manual.

## Our quality products – your benefit

The results of various endurance tests and inspections prove it and our customers' satisfaction around the whole world reflects it every single day – STRAUB pipe couplings can be trusted. They offer immense customer benefit, convince through practice-tested safety and consequent cost-effectiveness.

### **System independence**

Connects the most varied pipe materials

### **Flexible pipe connection**

Stress-free, compensates for tolerances

### **Easy assembly**

Light, space-saving, no pipe-end preparation

### **Safe assembly without risk of fire or explosion**

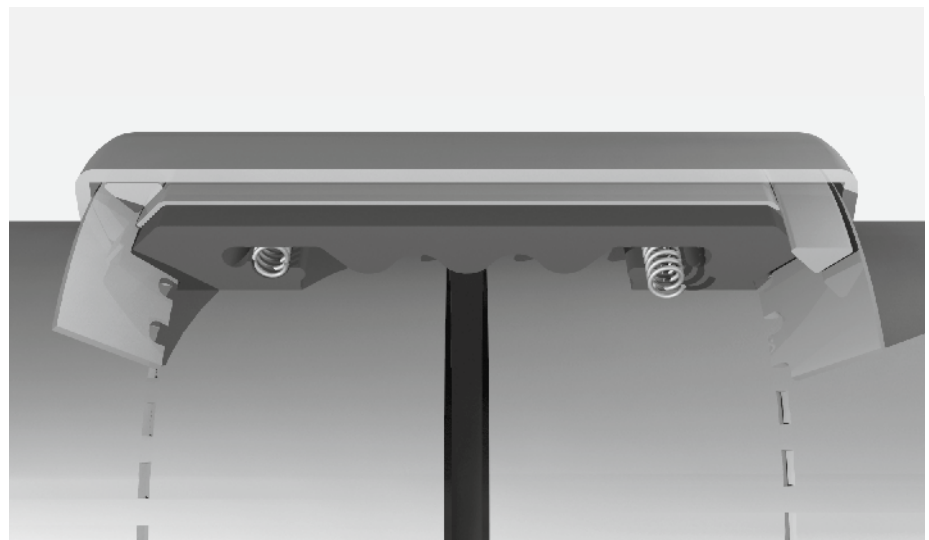
No protective measures required

### **Damping characteristics**

Noise, vibration, movement

### **Economical**

Cost-saving thanks to short assembly times



## The principles

### **Progressive sealing effect**

If the pressure in the pipe rises, the contact pressure on the sealing lips also increases due to the flow through the pressure equalisation channel.

### **Progressive anchoring effect**

If the axial tensile load on the pipe rises due to increased internal pressure or external influence, the teeth continuously penetrate deeper into the surface of the pipe to compensate.

# The right connection – more than a product

## Our services

The name STRAUB is synonymous with extensive coupling expertise in joining pipes. This expertise goes far beyond the development and manufacture of solid quality products. We assume responsibility for everything related to pipes and offer you individual solutions matched to your specific requirements.

In doing so, we will accompany you through all processes of your project – from the first consultancy on site through project planning and engineering to the assembly and regular maintenance work around the whole world.

### **Your added value due to a reliable partnership**

We offer you complete project solutions and additional services with noticeable added value.



### **The installation package**

For comprehensive projects we will offer you, at request, our complete installation package as an attractive addition. It includes on-site survey, the coordination and organisation of the assembly and commissioning as well as the official acceptance of your project, taking into account all technical as well as country and industry-specific statutory provisions.



### **The service package**

Durable bonds – for us this also means long-time customer relationships based on partnership. Upon request, after joint projects have been completed, you will benefit from a comprehensive service package with extended guarantees, annual maintenance and competent consultancy through our service team.

We will be happy to inform you personally about our comprehensive services.

### **With an overview for the right connection**

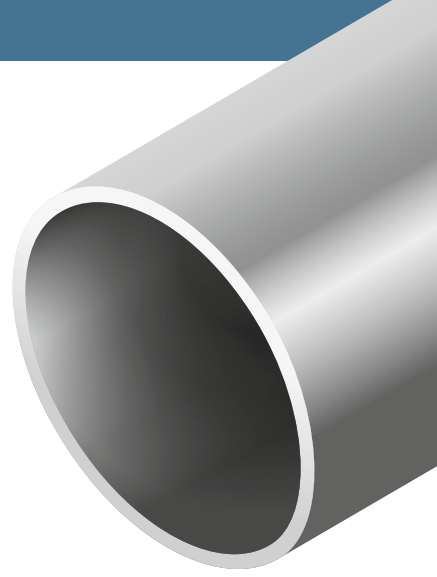
Due to our long-term practical experience we have expertise and the overview. We develop customised, precise detailed solutions which fully meet the demand of our customers for quality and the requirements of the particular markets.

**Count on the right connection.  
We will be happy to advise you  
personally.**





## Benefit from our international connections



### **Our partner network – your advantage**

Users all over the world in more than 60 countries place their trust in the universal STRAUB pipe coupling concept and benefit from our engineering competency and project experience. The Canadian subsidiary, an international partner network and a large number of support bases around the whole world guarantee the shortest possible delivery times and competent consultancy on site. Products are also manufactured under licence in Japan and Brazil. Wherever you are, you can benefit from our international connections.

A list of our partners is available on the Internet at [www.straub.ch](http://www.straub.ch)



STRAUB couplings are approved for virtually all pipeline systems.



an *OAliaxis* company

STRAUB Werke AG  
Straubstrasse 13  
7323 Wangs  
Switzerland

Tel. +41 81 725 41 00  
Fax +41 81 725 41 01  
straub@straub.ch

[www.straub.ch](http://www.straub.ch)



**Liability disclaimer:**

The information and data provided in this brochure are intended to inform the user about the range of Straub products. This information may contain inaccuracies or typographical errors. Furthermore, all information contained in this brochure is subject to change by STRAUB Werke AG without prior notice as a result of product re-designs, product improvements or other reasons.

STRAUB Werke AG accepts no liability for damage arising as a result of the use of data, diagrams or application examples in this brochure.