

Crash Cushions



**EuroTRACC®**



**TRINITY**  
**HIGHWAY**  
**INTERNATIONAL**

# EuroTRACC®

The EuroTRACC® is a redirective, energy absorbing crash cushion that can be used for unidirectional or bidirectional traffic flow applications. It is tested to EN 1317-3. Interchangeable components help reduce repair costs for highway agencies and departments of transportation.

The EuroTRACC® can be used to shield fixed objects 610 mm to 1,800 mm wide.

## Assembly and Maintenance

- Can be installed on new or existing concrete or asphalt pad.
- Open frame design helps facilitate installation, inspection, or repair.

## Features

- Galvanized, all-steel construction for durability.
- Further tested to 110 km/h (P4), 100 km/h (P3), and 80 km/h (P2).
- The EuroTRACC® is CE marked and has been certified by an authorized EU Notified Body.

## Back-Up Structure and Attachments

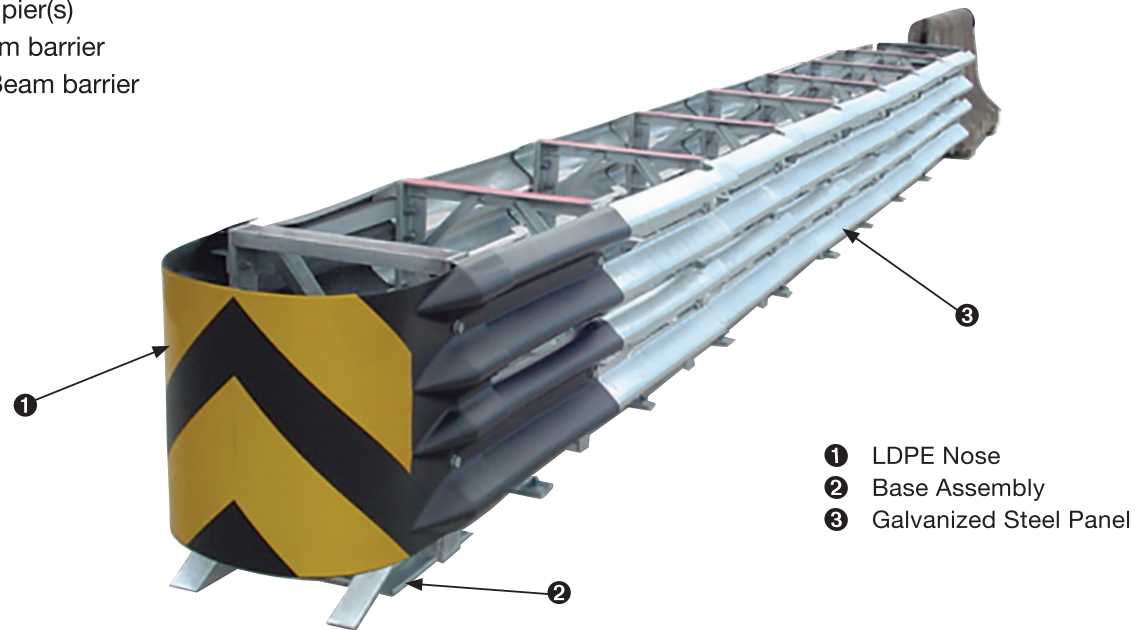
- Concrete barrier(s)
- Bridge parapet(s)
- Bridge pier(s)
- W-Beam barrier
- Thrie-Beam barrier

## Specifications

Typical 110 km/h Unit

- Length: 7.95 m
- Width: 610 mm Min. Width and 1,800 mm Max. Width
- Weight: 1,451 kg

**Tested to EN 1317-3 Class 110 with Impact Severity Class A (ASI ≤1.0) for the 110 km/h Narrow System.**



Distributed by:

[www.trinityhighway.com](http://www.trinityhighway.com)

USA Office: +1-214-589-8140  
UK Office: +44 1473 221105  
Sweden Office: +46 709 66 10 55  
Singapore Office: +65 6276 3398  
Central/South America: +1-916-644-9108

4-19



**Crash Cushions**



**FasTRACC™**



**TRINITY**  
**HIGHWAY**

*Ahead of the Curve®*

# FasTRACC™

The FasTRACC™ is a redirective, non-gating, energy absorbing crash cushion tested to NCHRP Report 350 Test Level 3 up to 70 mph (113 km/h). It can be used for unidirectional or bidirectional applications.

In addition to the FasTRACC™, the TRACC® family of crash cushions also includes the TRACC®, a narrow crash cushion tested to NCHRP Report 350 Test Level 3; the ShorTRACC™, a narrow cushion tested to NCHRP Report 350 Test Level 2; and the WideTRACC™ available for various lengths, widths, and test levels (per design speed) can be configured for appropriate wide applications.

## Features

- Galvanized all-steel construction designed for durability.
- Backup width options and wing extensions available with WideFasTRACC™.
- Designed to use fewer anchor bolts than comparable crash cushions.
- Tested to NCHRP Report 350 Test Level 3 up to 70 mph (113 km/h).

## Assembly and Maintenance

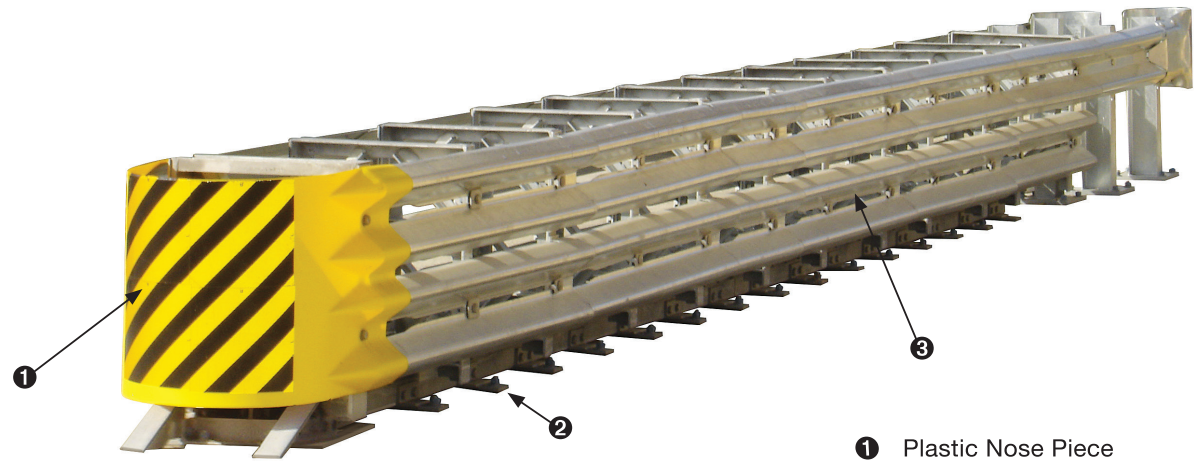
- Can be installed on new or existing concrete or asphalt pad.
- Open frame design helps facilitate installation, inspection, or repair.\*
- Units ship assembled. Can be shipped unassembled upon request.

## Specifications

- 26' Long (7.9 m)
- 24" Wide (610 mm)
- 4,000 lbs. (1,814 kg)

## Back-Up Structure and Attachments

- Concrete barrier(s)
- Bridge parapet(s)
- Bridge pier(s)
- Square blocks(s)
- W-Beam
- Thrie-Beam



- ① Plastic Nose Piece
- ② Base with Rip Plates
- ③ Galvanized Steel Panel

Distributed by:



**Crash Cushions**



**ShorTRACC™**



**TRINITY**  
**HIGHWAY**

*Ahead of the Curve®*

# ShorTRACC™

The ShorTRACC™ is a redirective, non-gating, energy absorbing crash cushion tested to NCHRP Report 350 Test Level 2. It can be used for unidirectional or bidirectional applications.

In addition to the ShorTRACC™, the TRACC® family of crash cushions also includes the TRACC®, a narrow crash cushion tested to NCHRP Report 350 Test Level 3; the FasTRACC™, a narrow crash cushion tested to NCHRP Report 350 Test Level 3 up to 70 mph (113 km/h); and the WideTRACC™ available for various lengths, widths, and test levels (per design speed) can be configured for appropriate wide applications.

## Features

- Galvanized all-steel construction designed for durability.
- Backup width options and wing extensions available with WideShorTRACC™.
- Designed to use fewer anchor bolts than comparable crash cushions.
- Tested to NCHRP Report 350 Test Level 2.

## Assembly and Maintenance

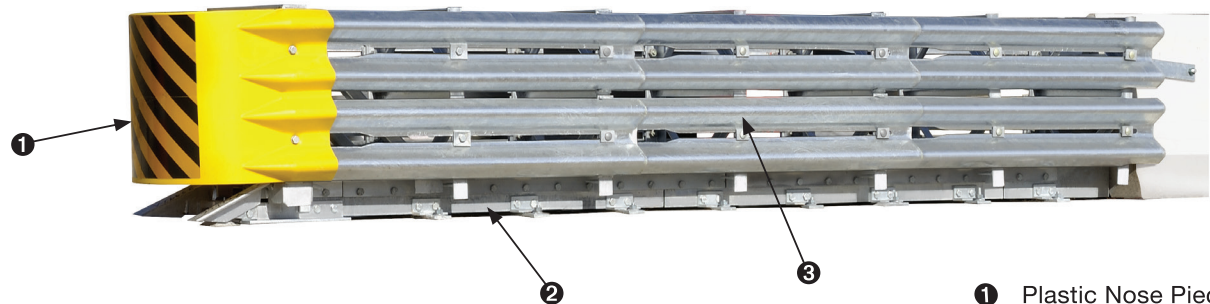
- Can be installed on new or existing concrete or asphalt pad.
- Open frame design helps facilitate installation, inspection, or repair.\*
- Units ship assembled. Can be shipped unassembled upon request.

## Specifications

- 14' 3" Long (4.3 m)
- 24" Wide (610 mm)
- 2,200 lbs. (998 kg)

## Back-Up Structure and Attachments

- Concrete barrier(s)
- Bridge parapet(s)
- Bridge pier(s)
- Square block(s)
- W-Beam
- Thrie-Beam



- ① Plastic Nose Piece
- ② Base with Rip Plates
- ③ Galvanized Steel Panel

Distributed by:



**Crash Cushions**



**TRACC<sup>®</sup>**



**TRINITY**  
**HIGHWAY**

*Ahead of the Curve<sup>®</sup>*

# TRACC®

The TRACC® is a redirective, non-gating, energy absorbing crash cushion tested to NCHRP Report 350 Test Level 3. It can be used for unidirectional or bidirectional applications.

The TRACC® family of crash cushions also includes the ShorTRACC™, a narrow cushion tested to NCHRP Report 350 Test Level 2; the FasTRACC™, a narrow crash cushion tested to NCHRP Report 350 Test Level 3 up to 70 mph (113 km/h); and the WideTRACC™ available for various lengths, widths, and test levels (per design speed) can be configured for appropriate wide applications.

## Features

- Galvanized all-steel construction designed for durability.
- Backup width options and wing extensions available with WideTRACC™.
- Designed to use fewer anchor bolts than comparable crash cushions.
- Tested to NCHRP Report 350 Test Level 3.

## Assembly and Maintenance

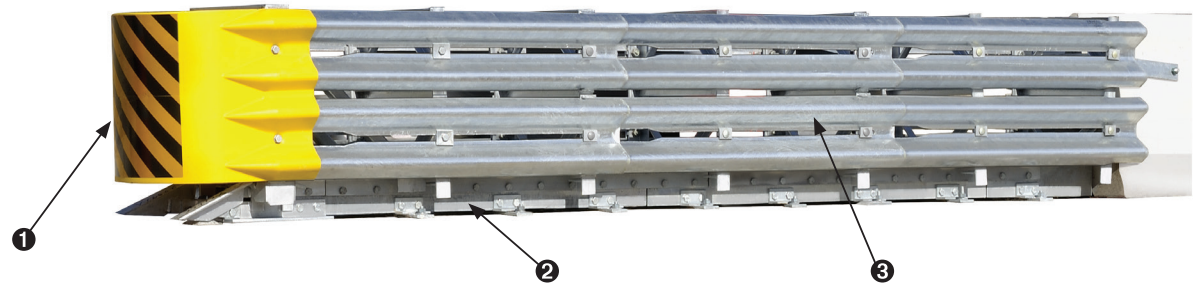
- Can be installed on new or existing concrete or asphalt pad.
- Open frame design helps facilitate installation, inspection, or repair.\*
- Units ship assembled. Can be shipped unassembled upon request.

## Specifications

- 21' 3" Long (6.5 m)
- 24" Wide (610 mm)
- 3,200 lbs. (1451 kg)

## Back-Up Structure and Attachments

- Concrete barrier(s)
- Bridge parapet(s)
- Bridge pier(s)
- Square block(s)
- W-Beam
- Thrie-Beam



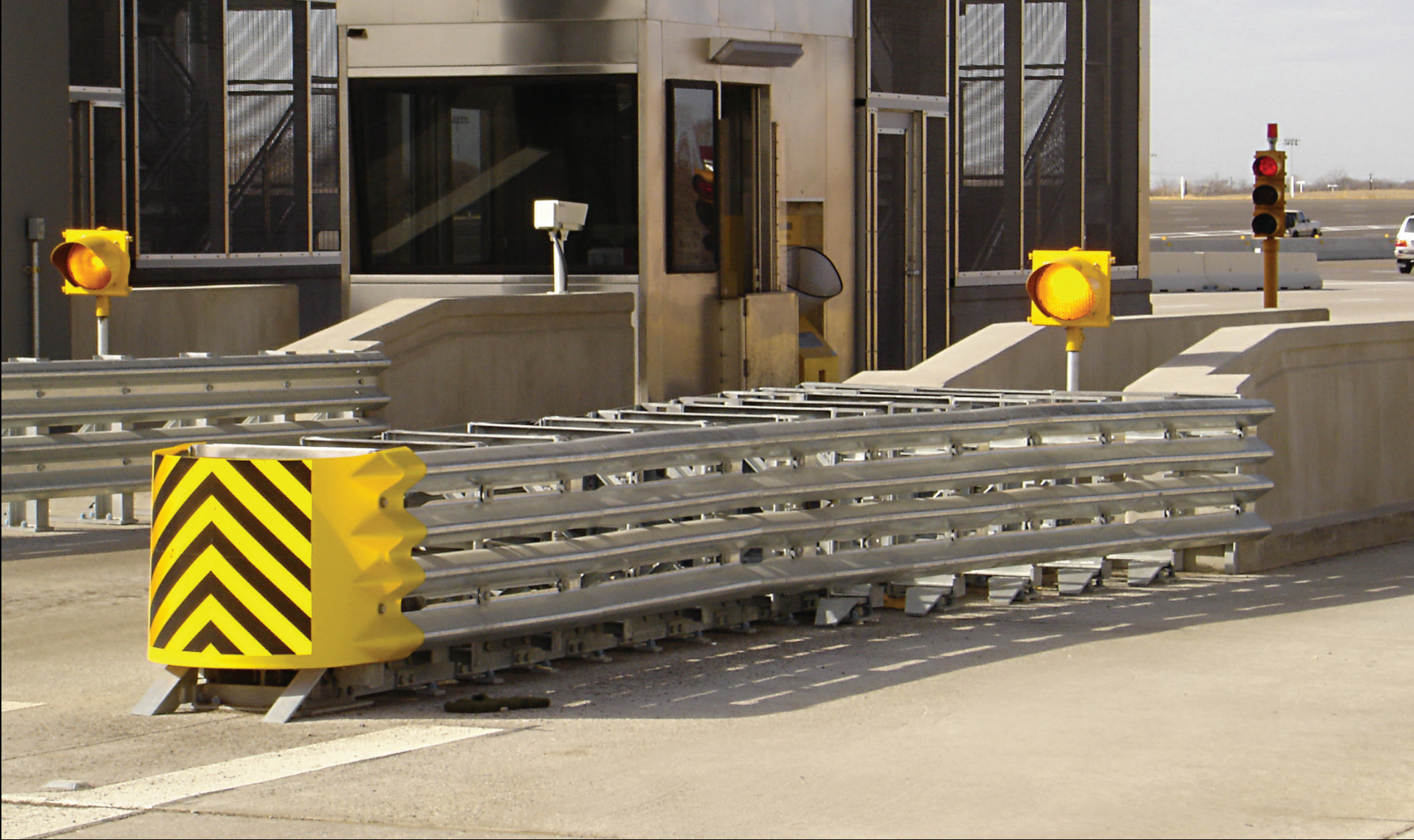
- ❶ Plastic Nose Piece
- ❷ Base with Rip Plates
- ❸ Galvanized Steel Panel

Distributed by:





Crash Cushions



**WideTRACC™**



**TRINITY**  
**HIGHWAY**

*Ahead of the Curve®*

# WideTRACC™

The WideTRACC™ is a redirective, non-gating, energy absorbing crash cushion tested to NCHRP Report 350 Test Level 2 and Test Level 3. It can be used for unidirectional or bidirectional applications.

The TRACC® family of crash cushions includes the TRACC®, a narrow crash cushion tested to NCHRP Report 350 Test Level 3; the ShorTRACC™, a narrow cushion tested to NCHRP Report 350 Test Level 2; the FasTRACC™, a narrow crash cushion tested to NCHRP Report 350 Test Level 3 up to 70 mph (113 km/h); and the WideTRACC™ available for various lengths, widths, and test levels (per design speed) can be configured for appropriate wide applications.

## Features

- Galvanized all-steel construction designed for durability.
- Backup width options and wing extensions available for the TRACC®, ShorTRACC™, and FasTRACC™.
- Designed to use fewer anchor bolts than comparable crash cushions.
- Tested to NCHRP Report 350 Test Level 2 and Test Level 3.

## Assembly and Maintenance

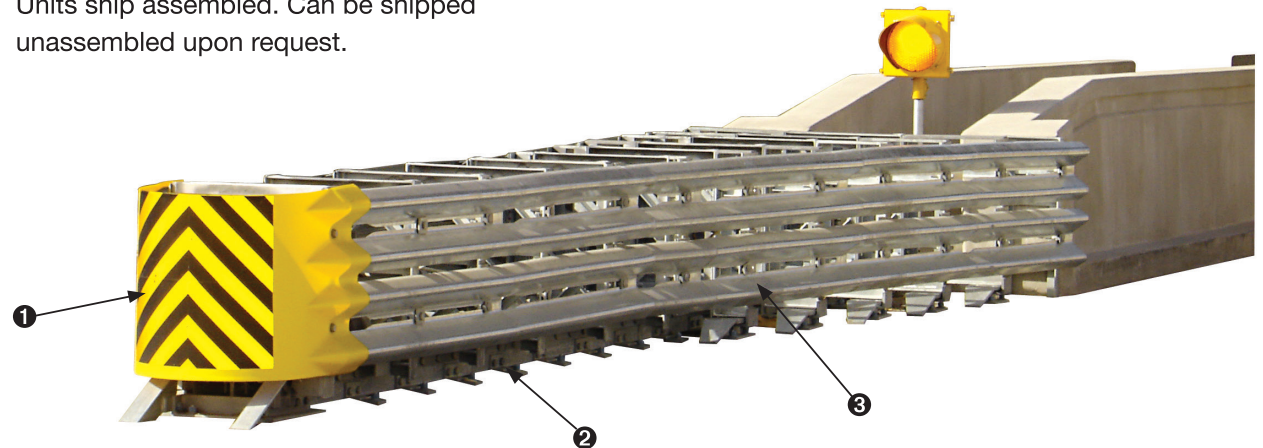
- Can be installed on new or existing concrete or asphalt pad.
- Open frame design helps facilitate installation, inspection, or repair.\*
- Units ship assembled. Can be shipped unassembled upon request.

## Specifications

- 21' Long (6.4 m)
- 58" Wide Standard (1.47 m)
- 3,825 lbs. (1735 kg)
- Can be configured for various wide applications

## Back-Up Structure and Attachments

- Concrete barrier(s)
- Bridge parapet(s)
- Bridge pier(s)
- Square block(s)
- W-Beam
- Thrie-Beam



- ① Plastic Nose Piece
- ② Base with Rip Plates
- ③ Galvanized Steel Panel

Distributed by:

