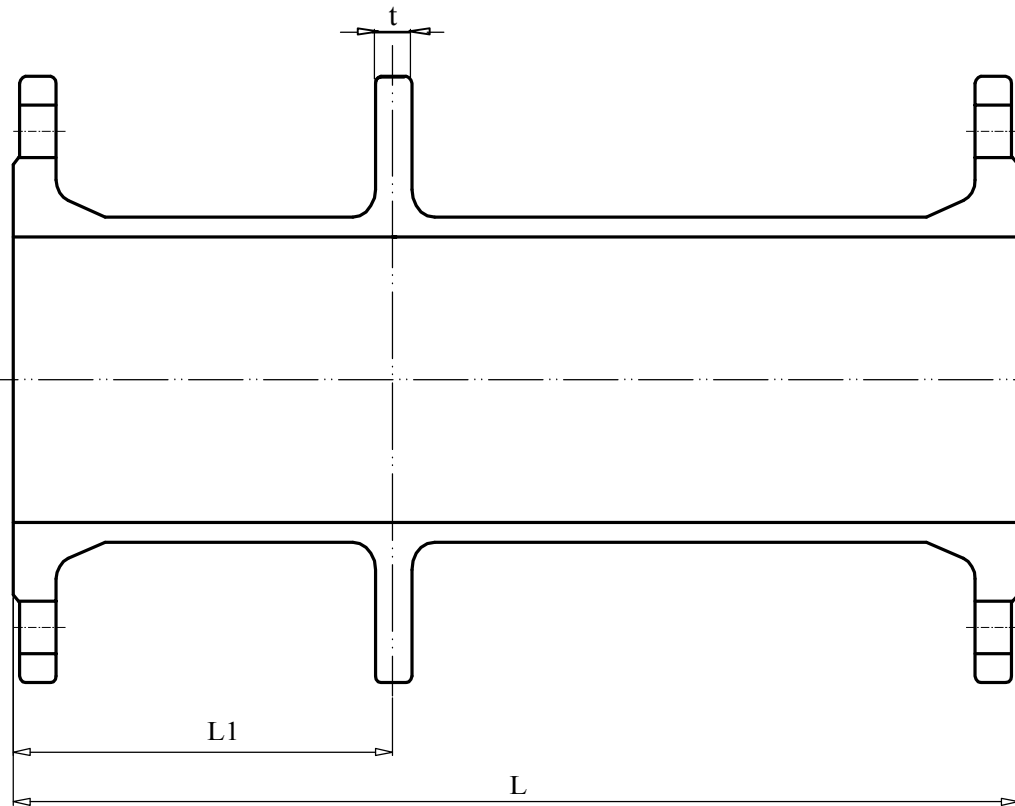


## Ductile Iron Pipe



Description	DN	L	L1	Ends	PN	t
DI Pipe with PF	250	1500	750	FL-PF-FL	25	21.5
DI Pipe with PF	300	1500	750	FL-PF-FL	25	23.5
DI Pipe with PF	300	1500	750	FL-PF-FL	16	20.5
DI Pipe with PF	800	1700	750	FL-PF-FL	25	46

### Technical Specification:

1. Ductile iron pipe & fitting are manufactured in accordance with ISO 2531;
2. Thickness K12 for pipes;
3. Flange drilled to EN1092-2 PN16 or 25;
4. External and Internal coating:FBE coated to 300 microns.

\*\*\*Technical improvements reserved the right to DELTA.

## DUCTILE IRON PIPES

ISO 2531  
EN545  
ISO 4179  
ISO 8179  
EN 1092-2 PN16/25

Double Flange Pipe  
with puddle flange  
FBE coating  
RAL 5015

Ref. No.: 9423RV2

SUPPLIER:  
XUZHOU DELTA

